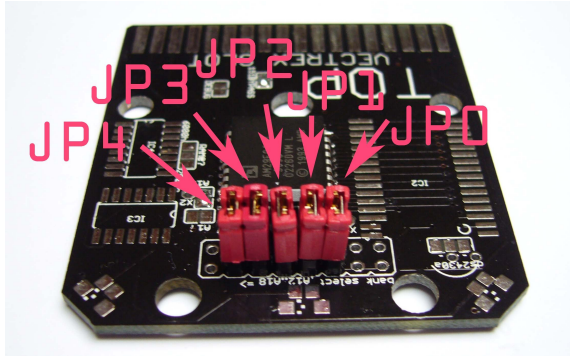


Vectrex Multicart

Users Manual - read carefully before operating!

Welcome to your new Vectrex Multicart with games selection. Please select game no. as seen in table below!

Your multicart may have up to five Jumpers. The number of jumpers corresponds to the number of games:



<i>no. of jumpers</i>	<i>games</i>
5 (JP0,JP1,JP2,JP3,JP4)	32
4 (JP0,JP1,JP2,JP3)	16
3 (JP0,JP1,JP2)	8

The first jumper from the right is called JP0!

The following tables show Jumper configurations for the corresponding game numbers:

32 games		16 games		8 games			
no.	JP4,JP3,JP2,JP1,JP0	no.	JP3,JP2,JP1,JP0	no.	JP2,JP1,JP0		
1	00000	1	0000	1	000		
2	0000X	2	000X	2	00X		
3	000X0	3	00X0	3	0X0		
4	000XX	4	00XX	4	0XX		
5	00X00	5	0X00	5	X00		
6	00X0X	6	0X0X	6	X0X		
7	00XX0	7	0XX0	7	XX0		
8	00XXX	8	0XXX	8	XXX		
9	0X000	9	X000				
10	0X00X	10	X00X				
11	0X0X0	11	X0X0				
12	0X0XX	12	X0XX				
13	0XX00	13	XX00				
14	0XX0X	14	XX0X				
15	0XXX0	15	XXX0				
16	0XXXX	16	XXXX				
17	X0000	<div>X = jumper is set 0 = jumper is NOT set</div> <div>example1: 00XXX = JP4,JP3 not set and JP2,JP1,JP0 set</div> <div>example2: 00XX = JP3,JP2 not set and JP1,JP0 set</div>					
18	X000X						
19	X00X0						
20	X00XX						
21	X0X00						
22	X0X0X						
23	X0XX0						
24	X0XXX						
25	XX000						
26	XX00X						
27	XX0X0						
28	XX0XX						
29	XXX00						
30	XXX0X						
31	XXXX0						
32	XXXXX						

X = jumper is set
0 = jumper is NOT set

example1:

00XXX = JP4,JP3 not set and JP2,JP1,JP0 set

example2:

00XX = JP3,JP2 not set and JP1,JP0 set

When inserting card into Vectrex make sure the side labeled "TOP" is looking up!
-happy gaming!!